



Wildlife Ordinance

Overview Presentation | MAY 2022

Project website: planning4la.org/wildlife



In This Presentation

Background & Importance

Wildlife Ordinance Overview

Timeline & Next Steps

Wildlife Ordinance:
planning4la.org/wildlife



Background

Global Environmental Challenges



UNITED NATIONS DECADE ON
**ECOSYSTEM
RESTORATION**
2021-2030

Local Environmental Challenges

42 million gallons of sewage entered L.A. waterways in past 15 years

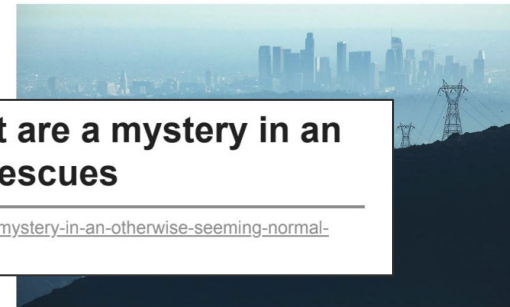
 dailynews.com/2022/04/10/42-million-gallons-of-sewage-entered-la-waterways-in-past-15-years/

21 sea lions found dead on OC coast are a mystery in an otherwise seeming normal year for rescues

 dailybreeze.com/2022/04/05/21-sea-lions-found-dead-on-oc-coast-are-a-mystery-in-an-otherwise-seeming-normal-year-for-rescues

Shocking No One, LA Is Number 1 In Smog Pollution Yet Again

By [Lita Martinez](#) and [Ryan Fonseca](#)
Published Apr 26, 2022 9:09 AM



The buildings of downtown Los Angeles are partially obscured on a Fall afternoon in 2019.

4 LOCAL WEATHER U.S. & WORLD THE SCENE ENTERTAINMENT NEWSLETTER

Mountain Lion Struck and Killed on 405 Freeway Ramp in Brentwood

The big cat killed early Thursday did not appear to be fitted with a tracking collar worn by mountain lions, including famed P-22, who are part of wildlife studies.


By [Jonathan Lloyd](#) • Published April 21, 2022 • Updated on April 21, 2022 at 3:25 pm



NEW THIS MORNING

**MOUNTAIN LION KILLED BY CAR ON 405 FREEWAY
BRENTWOOD**



ENFORCING MASKING AFTER FEDERAL JUDGE VOIDS CDC MANDATE  CDC LAUN 6:03 53°

CalMatters water and drought tracker

807

**NUMBER OF DAYS SINCE THE
DROUGHT BEGAN**

[LEARN MORE](#)

 **CAL MATTERS**

Support nonprofit news

\$10

\$15

\$25

OTHER

[DONATE](#)



6 million Southern Californians face unprecedented order to conserve water

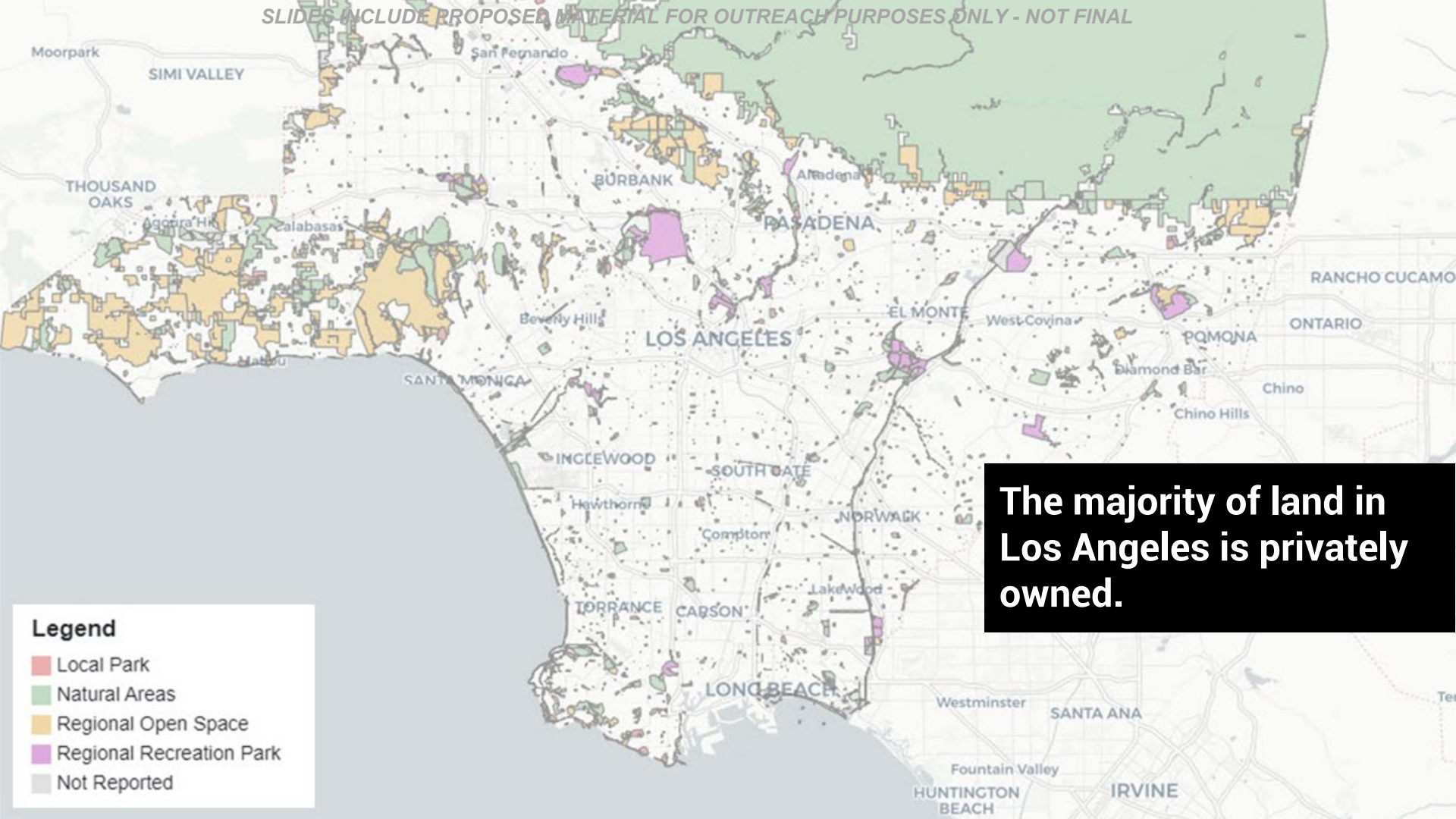
C4O
CITIES



**We have unique
biological & ecological
resources in Los Angeles**



Credit: Kat Superfisky

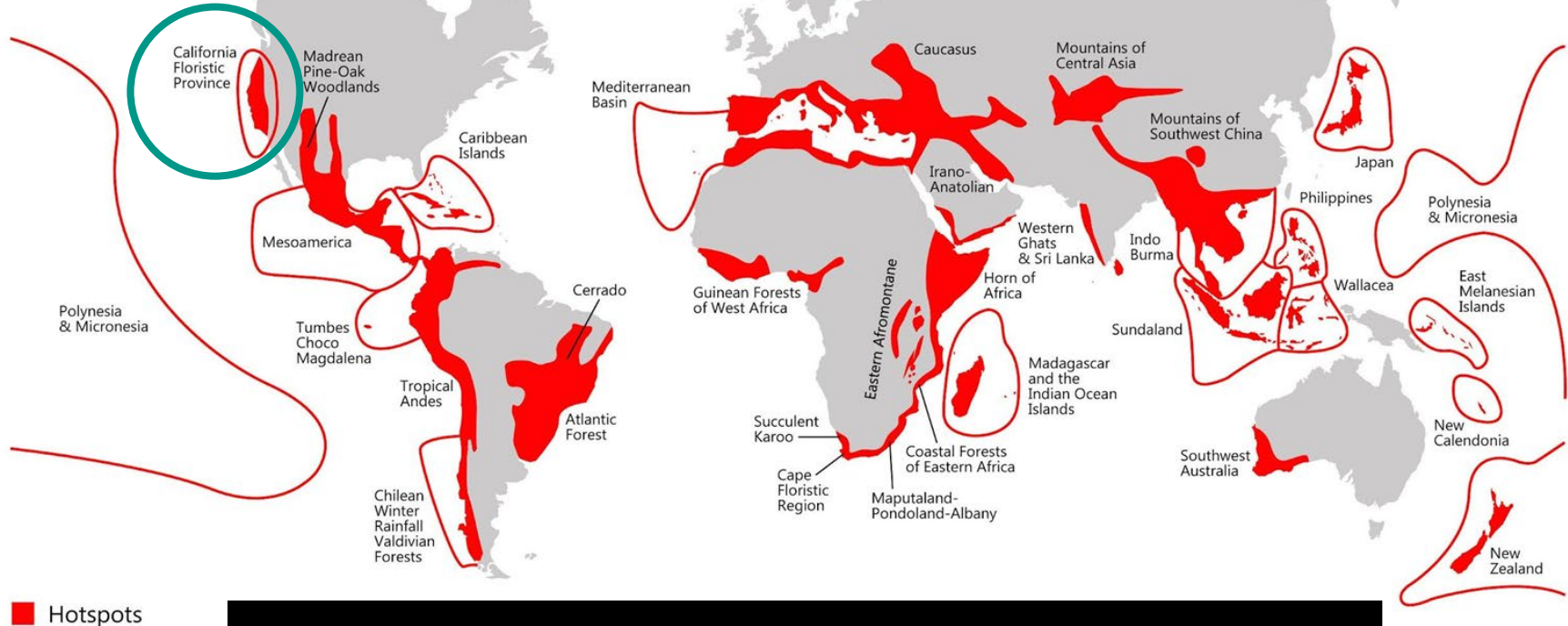


**The majority of land in
Los Angeles is privately
owned.**

Legend

- Local Park
- Natural Areas
- Regional Open Space
- Regional Recreation Park
- Not Reported

Los Angeles is located in a Global Biodiversity Hotspot!



The biodiversity in Los Angeles is globally significant.

Wildlife Pilot Study & Wildlife Ordinance



Interrelated Goals

Achieve more sustainable outcomes in hillside developments by promoting biodiversity and habitat preservation.





Simi Hills

Santa Monica
Mountains

Los Angeles

San Gabriel Mountains

San Bernardino Mountains

Santa Ana
Mountains

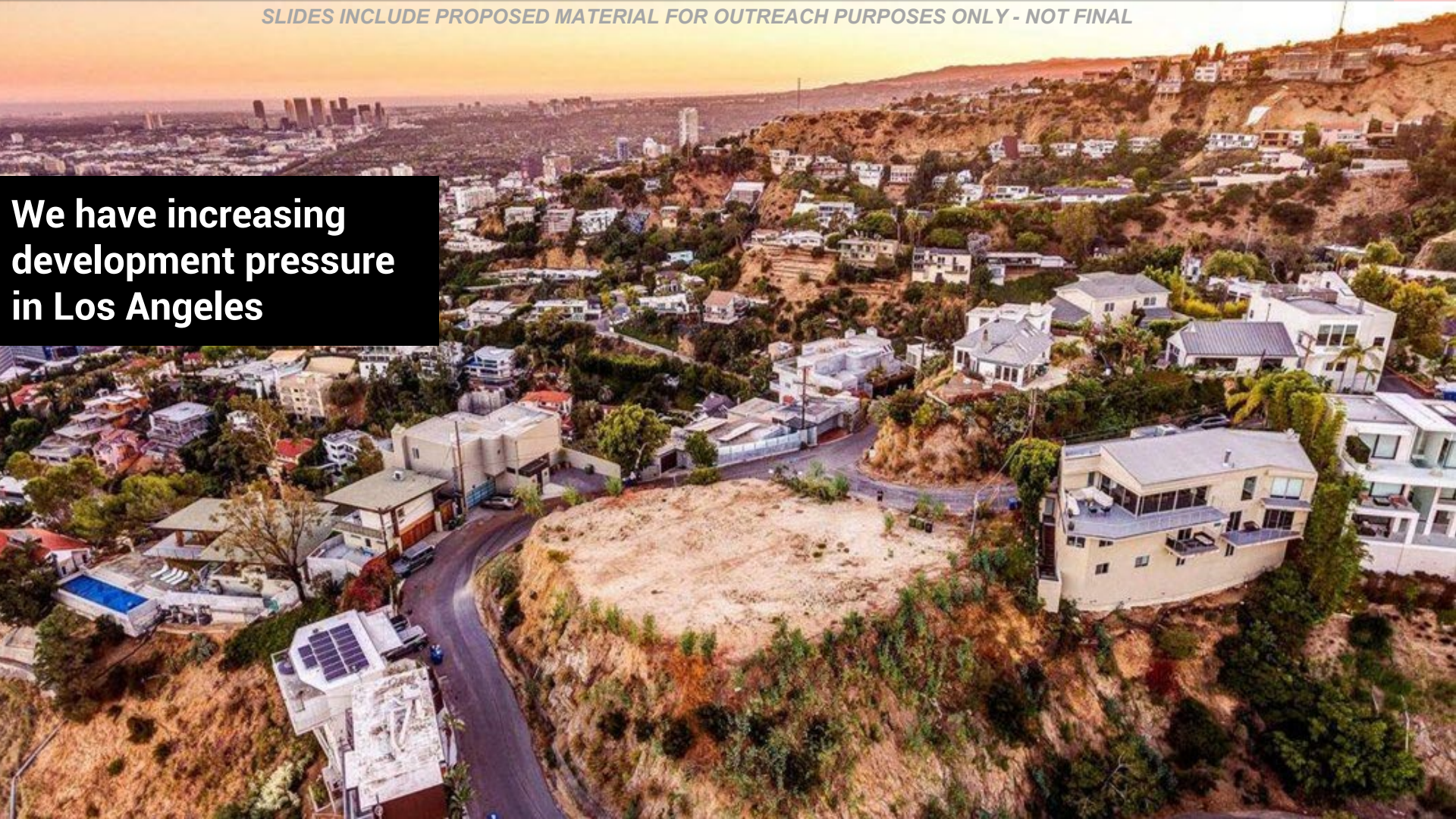
Santa
Margarita
Mountains

San Jacinto
Mountains



PROPOSED WILDLIFE
ORDINANCE DISTRICT

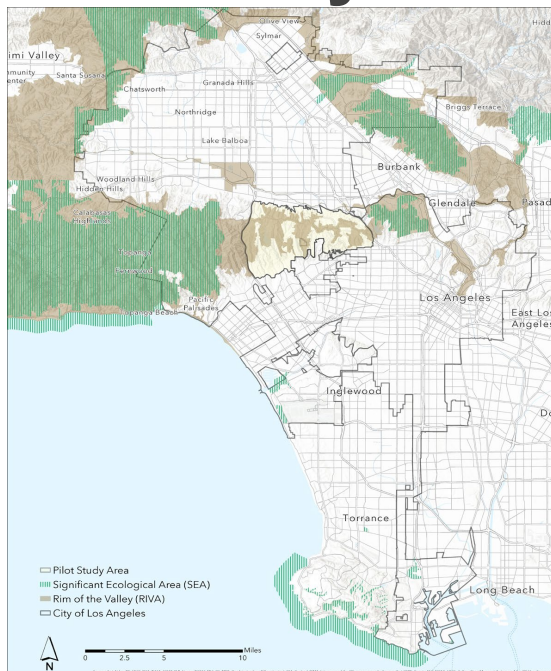
**We have increasing
development pressure
in Los Angeles**



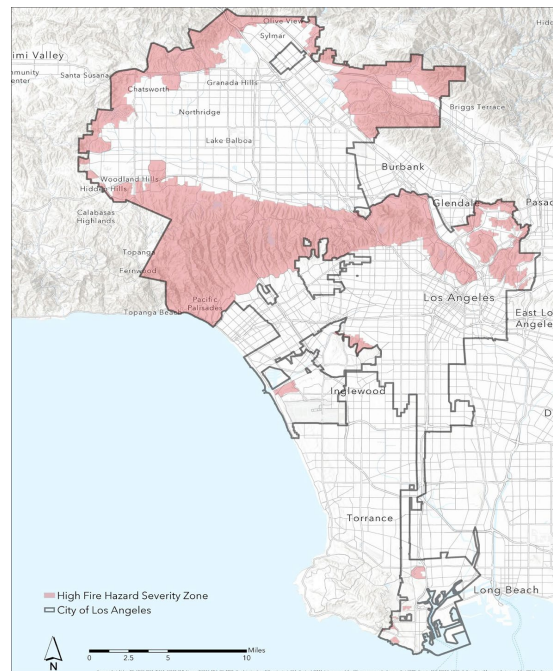


Wildlife Ordinance Overview

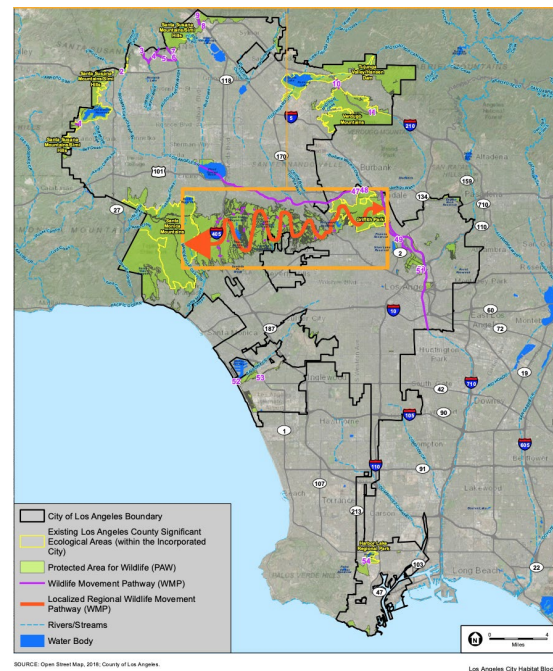
How was the Wildlife Ordinance District Boundary Determined?



**LA COUNTY SIGNIFICANT
ECOLOGICAL AREAS (SEAs) + RIVA**



**VERY HIGH FIRE HAZARD SEVERITY
ZONES**



SOURCE: Open Street Map, 2019; County of Los Angeles

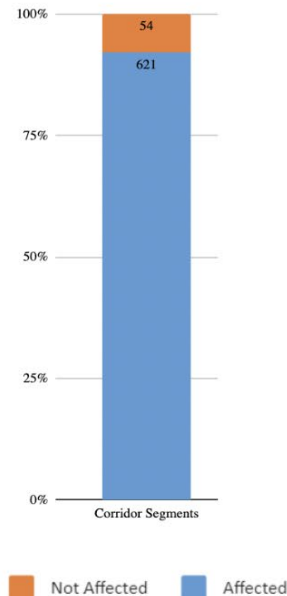
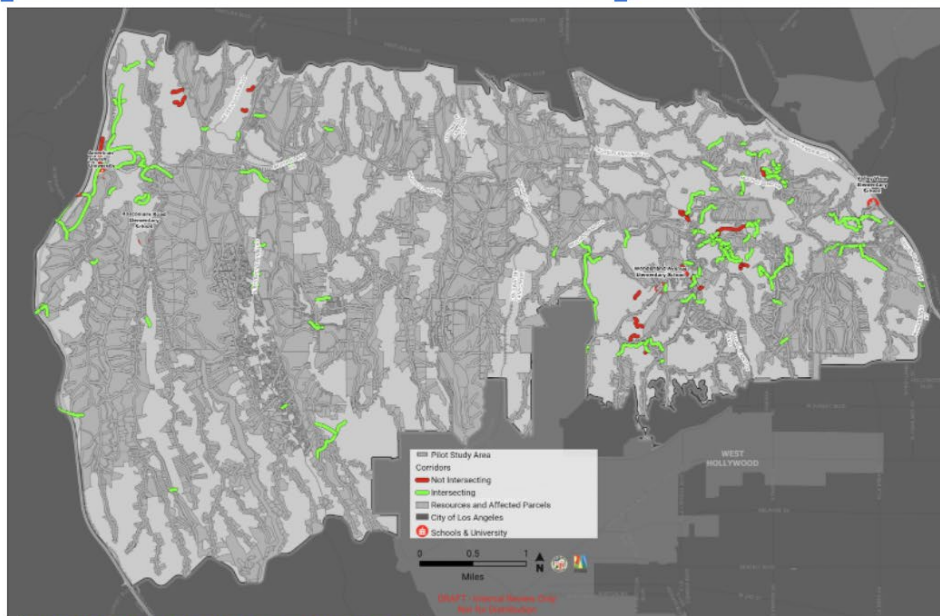
Figure 1: Protected Areas for Wildlife and Wildlife Movement Pathways



WILDLIFE MOVEMENT PATHWAYS

How was the Wildlife Ordinance District Boundary Determined?

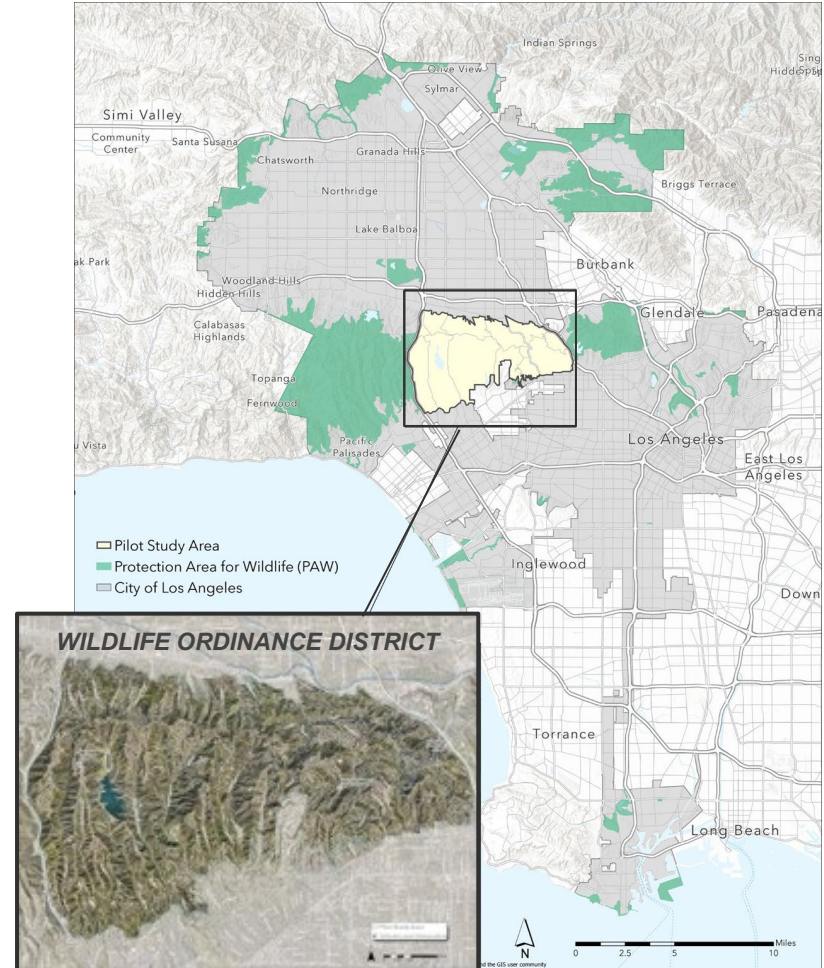
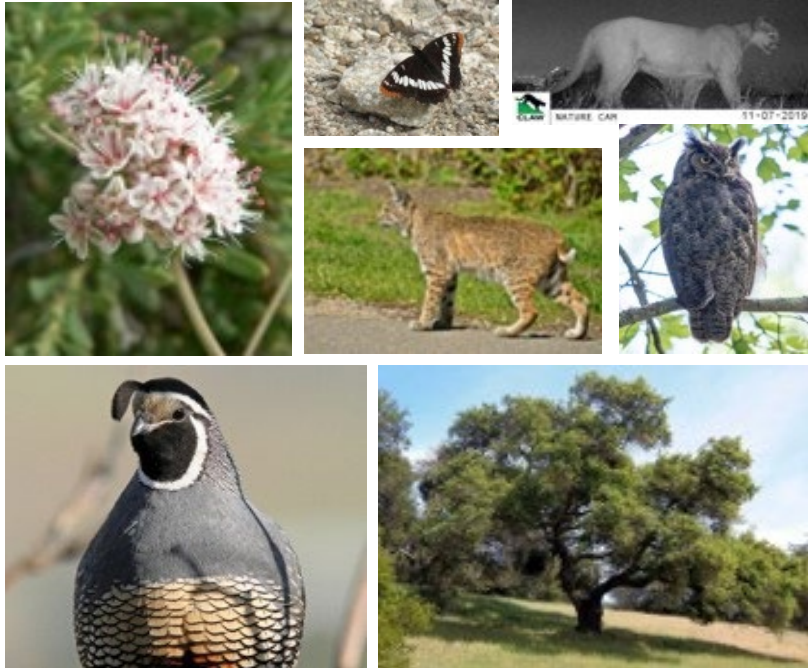
Parcels Affected by Resources vs Parcels Affected by SMMC Corridors



<https://dcpgisportal.insidela.org/portal/home/>

WILDLIFE PILOT STUDY

Protection Areas for Wildlife (PAWs)

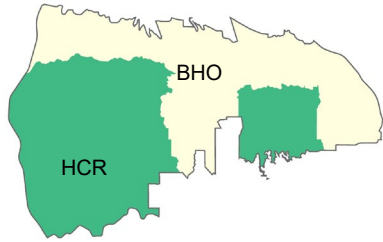


Wildlife Ordinance District Boundary

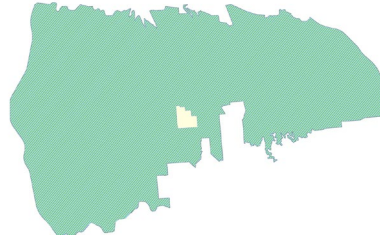


Compatibility with Existing Regulations

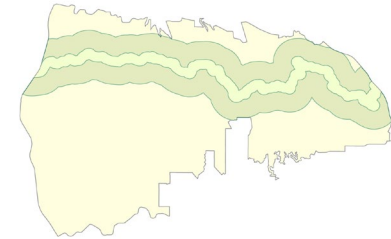
Hillside Regulations



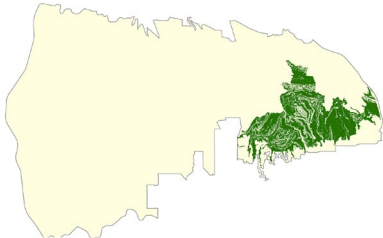
Very High Fire Severity Zones



Mulholland Specific Plan



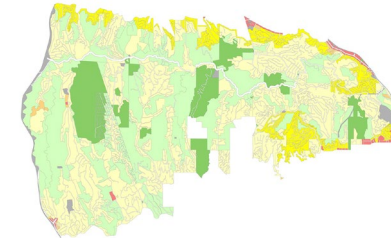
Hollywood Community Plan:
Slope Density



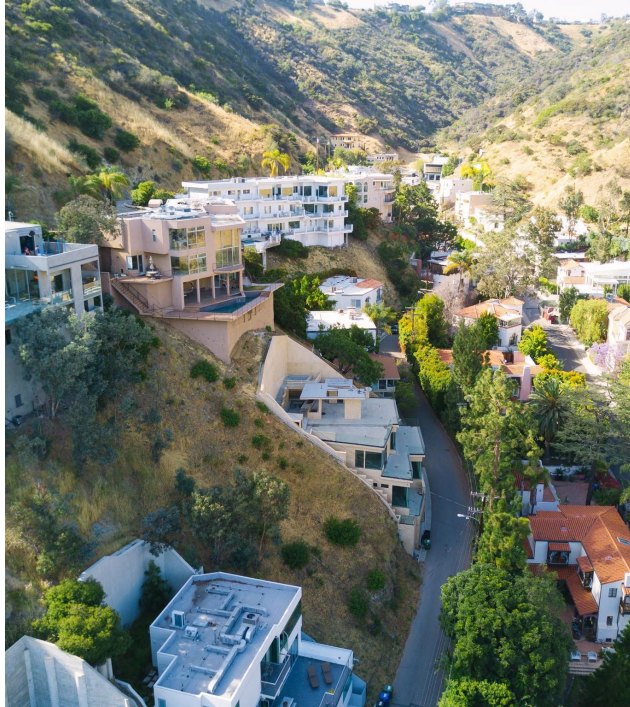
Ridgeline Protection
(Proposed)



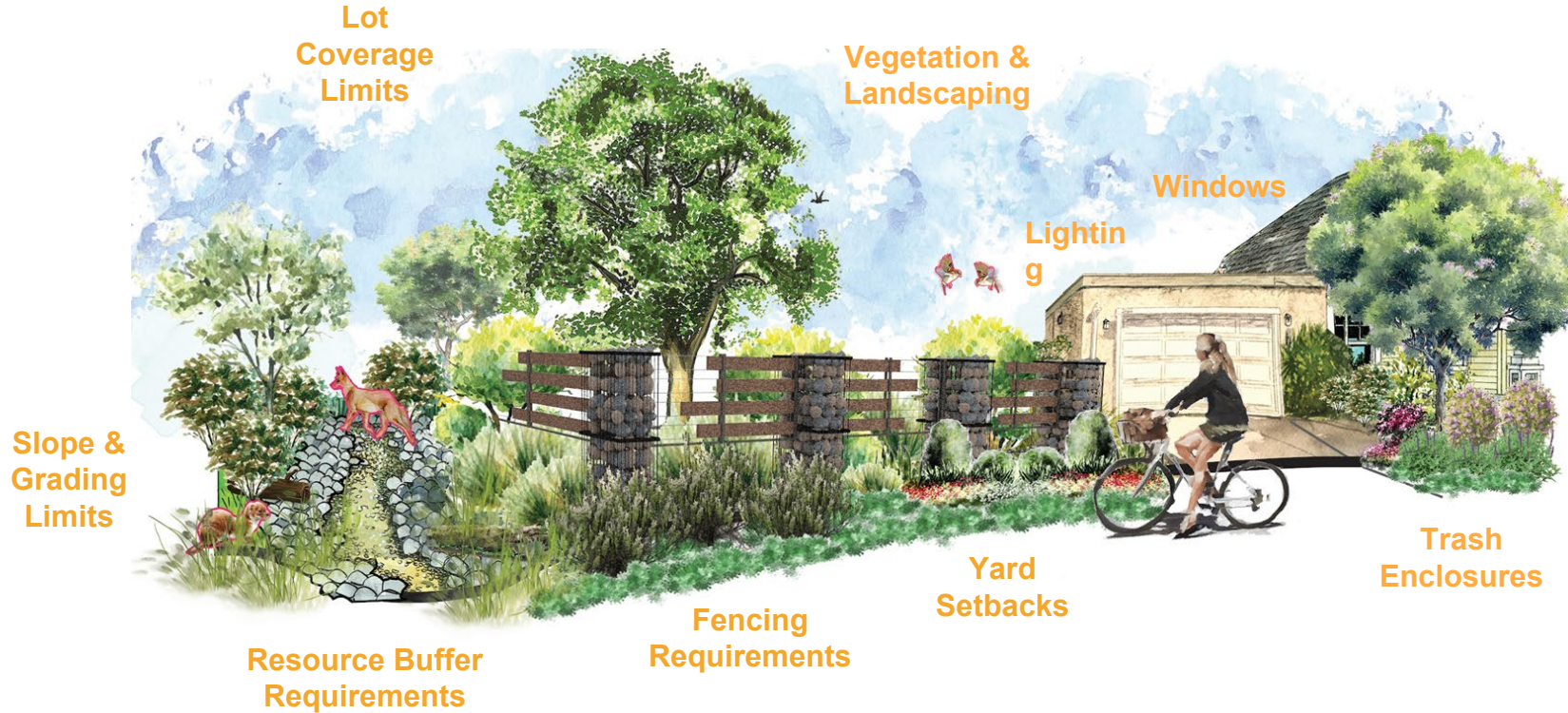
Existing Zoning



Existing Hillside Development Patterns



What Can New Regulations Help to Address?



What's a Project?

- **New Construction**
- **Major Remodels (similar to Mulholland SP)**
- **Additions > 500 square feet**
- **Grading projects exceeding > 500 c.y.**
- **Tree removal (Protected or Significant Trees, Trees in Public Right of Way)**
- **Activity in a Wildlife Resource Buffer requires review**

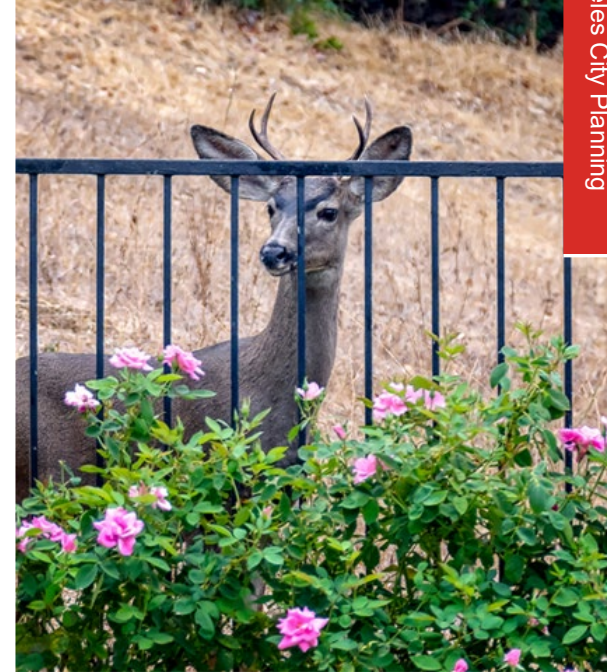
Maintain Wildlife Movement

Setbacks

To facilitate wildlife movement by minimizing obstacles and maintaining unobstructed space between properties.

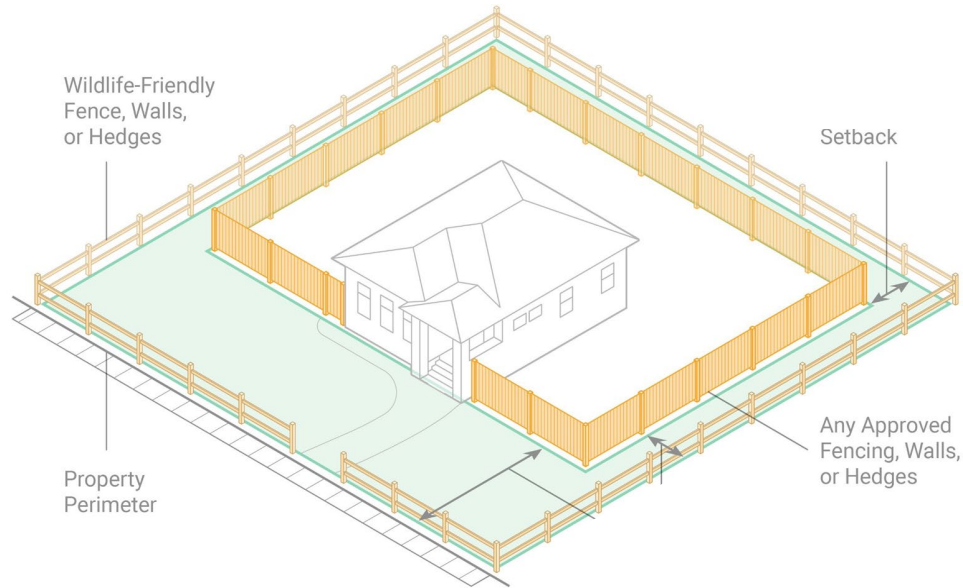
Fences, Walls, Hedges

To preserve access to habitat and facilitate wildlife movement by maintaining unobstructed space and minimizing obstacles to food and water, shelter, and breeding access by appropriate fence location and design.



Maintain Wildlife Movement

Setbacks, Fences, Walls, Hedges



Promote Biodiversity & Maintain Ecosystems

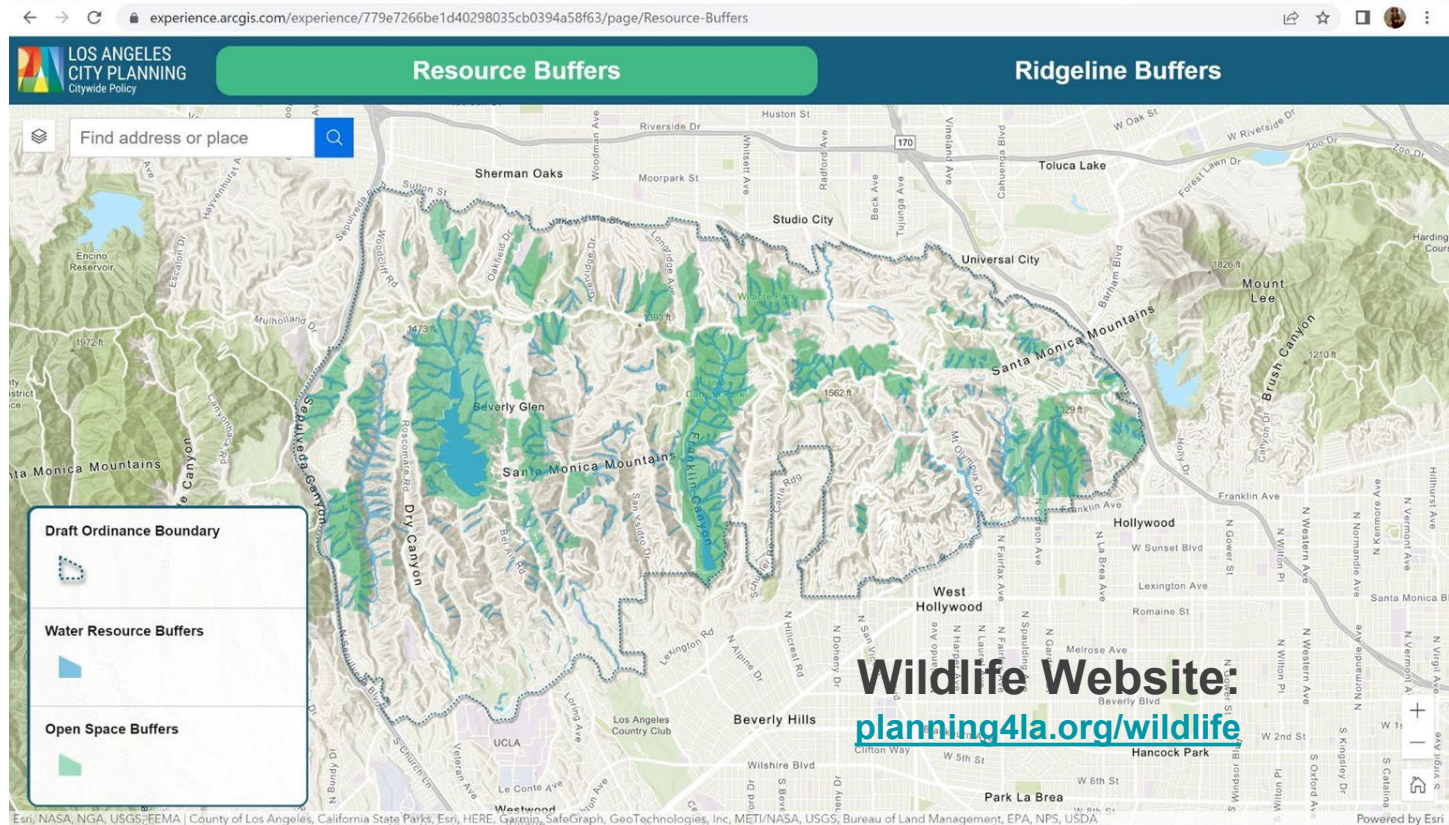
Intent

To protect Wildlife Resources that provide habitat connectivity opportunities and limit disturbances near waterways, and sensitive vegetation, and habitat areas

Proposed Regulations



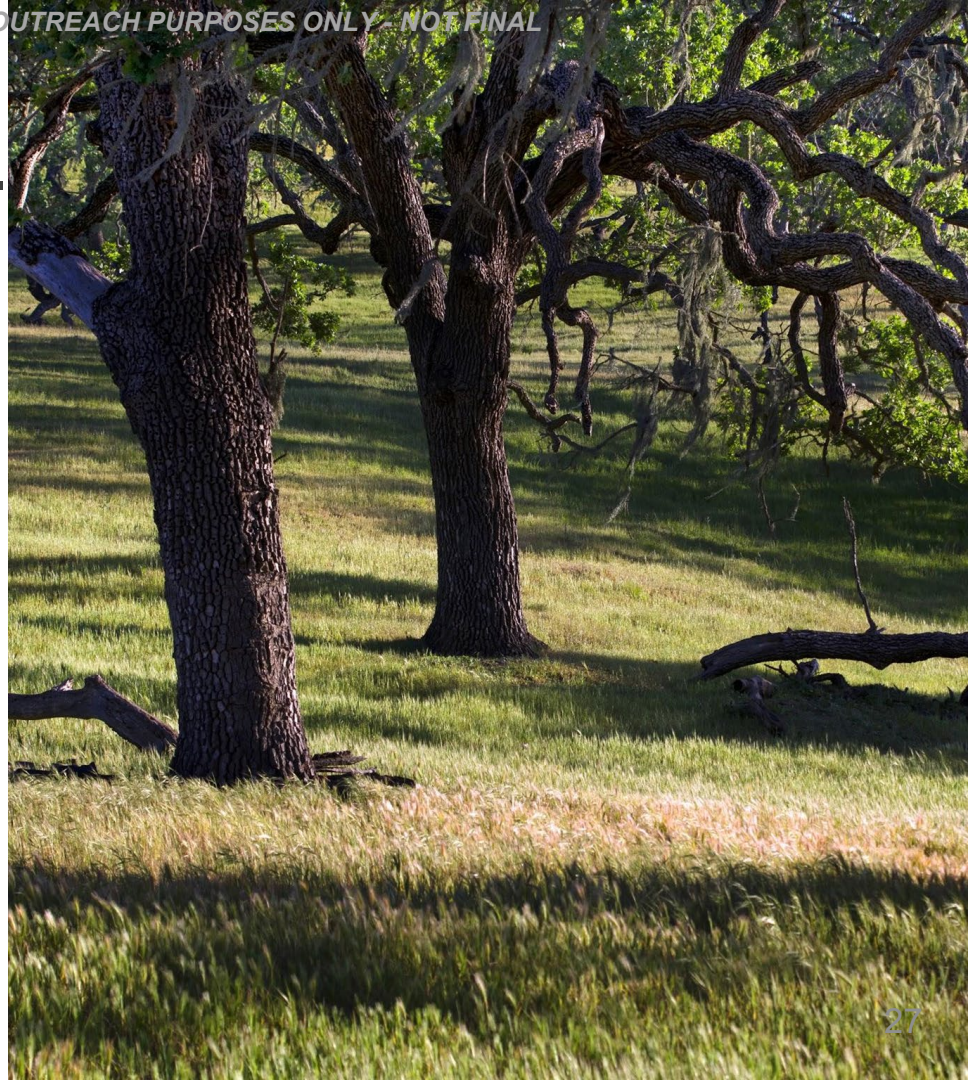
Proposed Resource Buffers



Promote Native Biodiversity- Vegetation & Landscaping

Intent

To maintain habitat, manage stormwater and sequester carbon by retaining Native and Significant Trees, and by incorporating native vegetation that supports wildlife.



Promote Native Biodiversity- Vegetation & Landscaping

Prohibited

City of Los Angeles Wildlife Ordinance DRAFT Prohibited Plant List

The Wildlife Ordinance prohibits the installation of any plant material categorized as 'Moderate' or 'High' in the current Invasive Plant Inventory for the Southwest region by the California Invasive Plant Council (CAL-IPC), and plants that are listed as noxious weeds by the California Department of Food & Agriculture or already prohibited by the City or surrounding jurisdictions. This includes the following plant species:

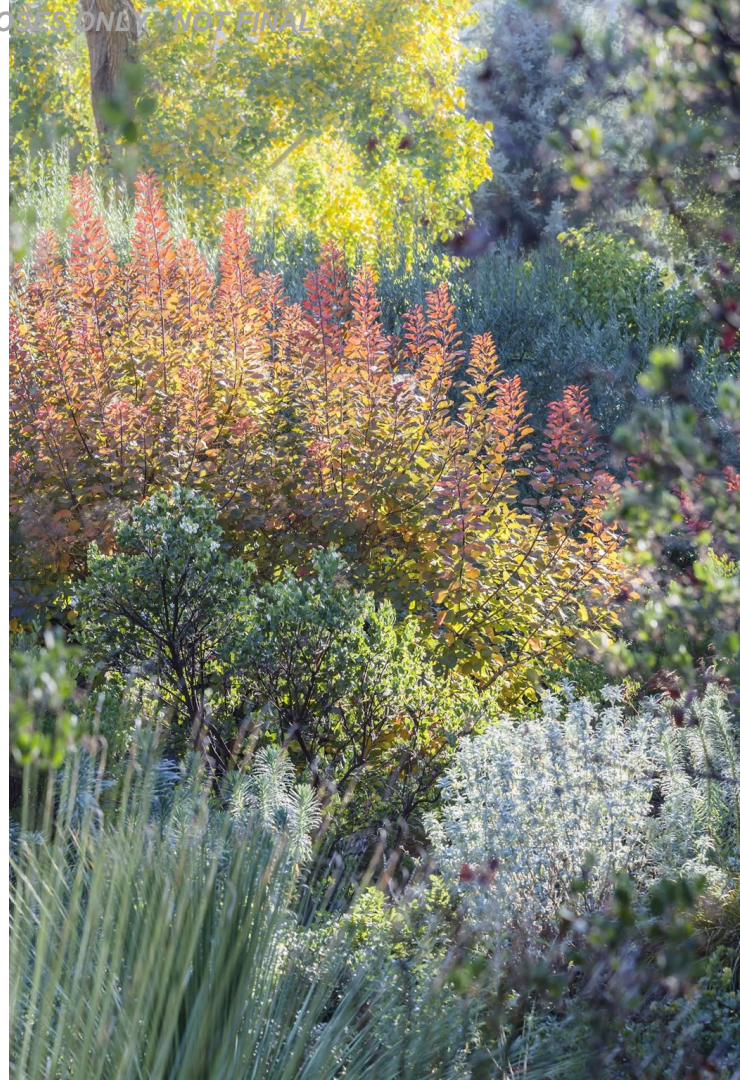
Botanical Name	Common Name
<i>Acacia dealbata</i>	Silver wattle
<i>Acacia longifolia</i>	Sidney golden wattle
<i>Acacia melanorhiza</i>	Blackwood acacia
<i>Acacia retinodes</i>	Water Wattle
<i>Adrophton repens</i>	Russian knapweed
<i>Aegilops triuncialis</i>	Barb goatgrass
<i>Ageratina adenophora</i>	Eupatory
<i>Alnus altissima</i>	Tree-of-Heaven
<i>Alhagi maurorum</i>	Camelthorn
<i>Alekanthera philoxeroides</i>	Aligator-weed
<i>Amaranthus albus</i>	Turnip-weed
<i>Ammophila arenaria</i>	European beachgrass
<i>Anthoxanthum odoratum</i>	Sweet vernalgrass
<i>Adenia corollata</i>	Red apple
<i>Arctotheca cuneolata</i>	Fertile cape-weed
<i>Arctotheca calendula</i>	Cape-weed
<i>Arctotheca prostrata</i>	Cape-weed
<i>Arundo donax</i>	Giant reed
<i>Asparagus asparagoides</i>	Birds creeper
<i>Asphodelus fistulosus</i>	Onion weed
<i>Atriplex semibaccata</i>	Australian saltbush
<i>Avena barbata</i>	Slender oat
<i>Avena fatua</i>	Wild oats
<i>Bassia hyssopifolia</i>	Bassia
<i>Belardella trixago</i>	Mediterranean linseed
<i>Brachypodium distachyon</i>	Annual false-brome
<i>Brachypodium sylvaticum</i>	Slender false-brome
<i>Brassica nigra</i>	Black mustard
<i>Brassica rapa</i>	Field mustard
<i>Brassica spp.</i>	Mustard
<i>Brassica tournefortii</i>	Sahara mustard
<i>Bromus diandrus</i>	Ripgut brome
<i>Bromus nondacneus</i>	Brome grass; Soft chess

Preferred

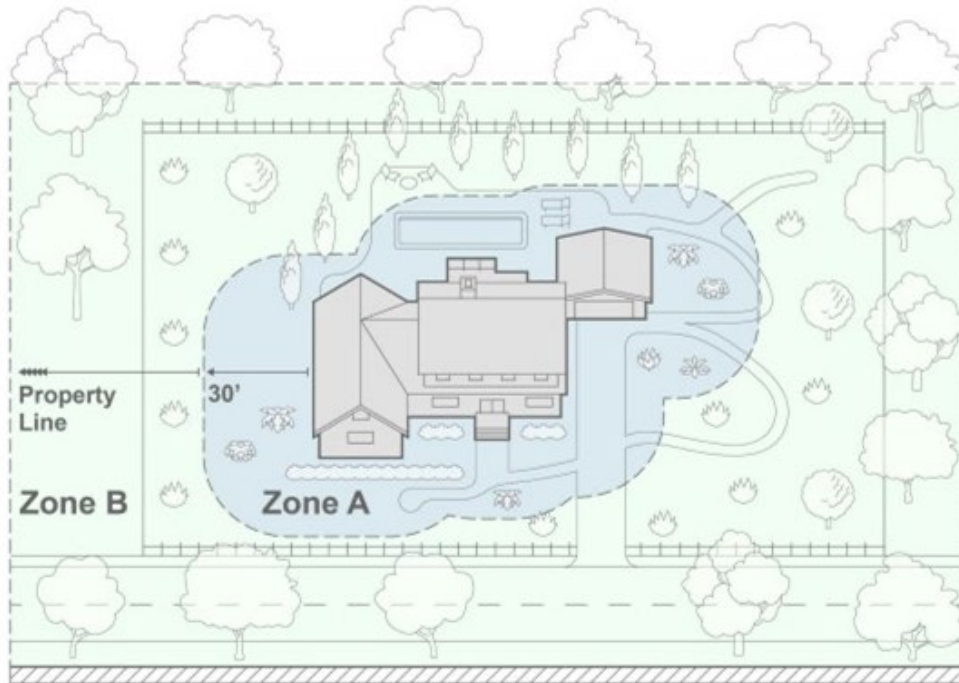
City of Los Angeles Wildlife Ordinance DRAFT Preferred Plant List

Planting of the following species is beneficial to native plant communities and/or wildlife and is, therefore, recommended within the City of Los Angeles where the Wildlife Ordinance applies. Use this list of preferred plants as a general guide only, tailoring the landscaping to the specific environment of the property. If necessary, in consultation with native plant experts.

Botanical Name	Common Name	Type
<i>Calandrinia ciliata</i>	Red maids	Annual
<i>Castilleja densiflora</i>	Onion clover	Annual
<i>Castilleja exserta</i>	Purple onion's clover	Annual
<i>Clerkia bottae</i>	Punchbowl godetia	Annual
<i>Clerkia purpurea</i>	Winecup clarkia	Annual
<i>Clerkia unguiculata</i>	Elegant clarkia	Annual
<i>Collinsia heterophylla</i>	Chinese houses	Annual
<i>Erysimum capitatum</i>	Douglas wallflower	Annual
<i>Eschscholzia caespitosa</i>	Colerless poppy	Annual
<i>Eschscholzia californica</i>	California poppy	Annual
<i>Gilia capitata</i>	Globe gilia	Annual
<i>Lasthenia californica</i>	Gold fields	Annual
<i>Lasthenia glabrata</i>	Yellow rayed lasthenia; Goldfields	Annual
<i>Layia platyglossa</i>	Tidy tips	Annual
<i>Lupinus bicolor</i>	Miniature lupine	Annual
<i>Lupinus hirsutissimus</i>	Stinging lupine	Annual
<i>Lupinus succulentus</i>	Arroyo lupine; Succulent lupine	Annual
<i>Nemophila menziesii</i>	Baby blue eyes	Annual
<i>Nicotiana quadrivalvis</i>	Indian tobacco	Annual
<i>Phacelia grandiflora</i>	Large-flowered phacelia	Annual
<i>Phacelia minor</i>	Wild Canterbury bells	Annual
<i>Phacelia parryi</i>	Parry's phacelia	Annual
<i>Phacelia tanacetifolia</i>	Lacy phacelia	Annual
<i>Platystemon californicum</i>	Cream cups	Annual
<i>Salvia columbiarica</i>	Chia	Annual
<i>Lupinus nanus</i>	Sky lupine	Annual
<i>Clerkia purpurea</i>	Purple clarkia	Annual
<i>Limnanthes douglasii ssp. sulphurea</i>	Meadow-foam	Annual
<i>Limnanthes douglasii</i>	Common meadow-foam; Poached egg plant	Annual
<i>Phacelia grandiflora</i>	Large-flowered phacelia	Annual
<i>Phacelia tanacetifolia</i>	Lacy phacelia	Annual
<i>Bloomeria crocea</i>	Golden stars	Bulb
<i>Calochortus albus</i>	White globe lily	Bulb



Promote Native Biodiversity- Vegetation & Landscaping



Native Landscaping Coverage

- **Planting Zone A: 50% Minimum Native Plant Coverage**
- **Planting Zone B: 75% Minimum Native Plant Coverage**

Fire-Safe Planting Area Zones

Minimize Site Disturbance

Grading

- Maintains natural topography and soil stability
- Protects existing vegetation and ecosystem health
- Minimizes sedimentation and other impacts to watershed functions

Residential Floor Area

- Limits overall development impacts
- Decreases pressure to build on the least suitable portions of lots

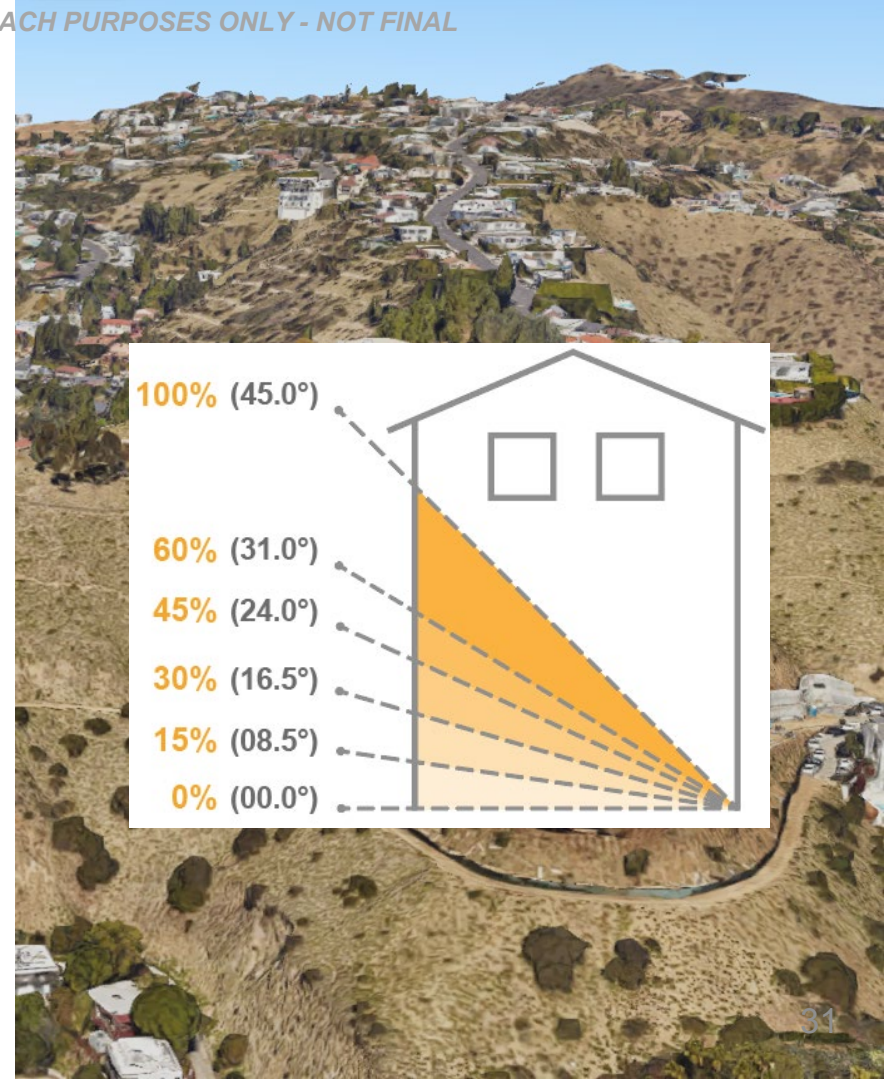
Lot Coverage

- Promotes permeable surfaces improving watershed functions
- Regulates a wider range of development activities that disturb vegetation and groundcover
- Encourages open space for wildlife

Builds on Baseline Hillside Ordinance, Hillside Construction Regulation, and Low Impact Development Standards

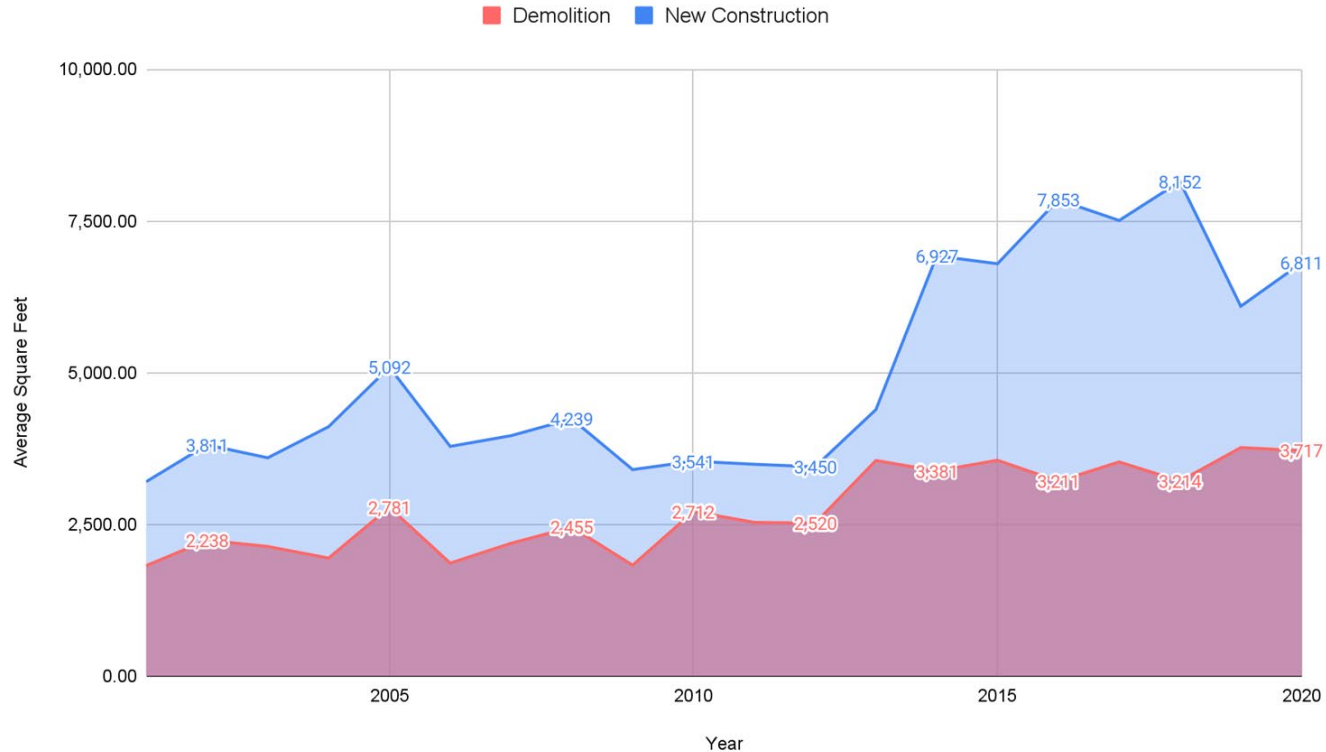
Minimize Site Disturbance Grading and RFA

- Prohibit grading or structures on natural slopes in excess of 100%
- Count Remedial grading on slopes 60% or greater
- RFA not allocated for slope bands 60% or greater
- Include Basements and Required Covered Parking in RFA



Minimize Site Disturbance

Increasing Average Square Feet



Minimize Site Disturbance Lot Coverage

Existing

Building &
Structures

Proposed Regulations

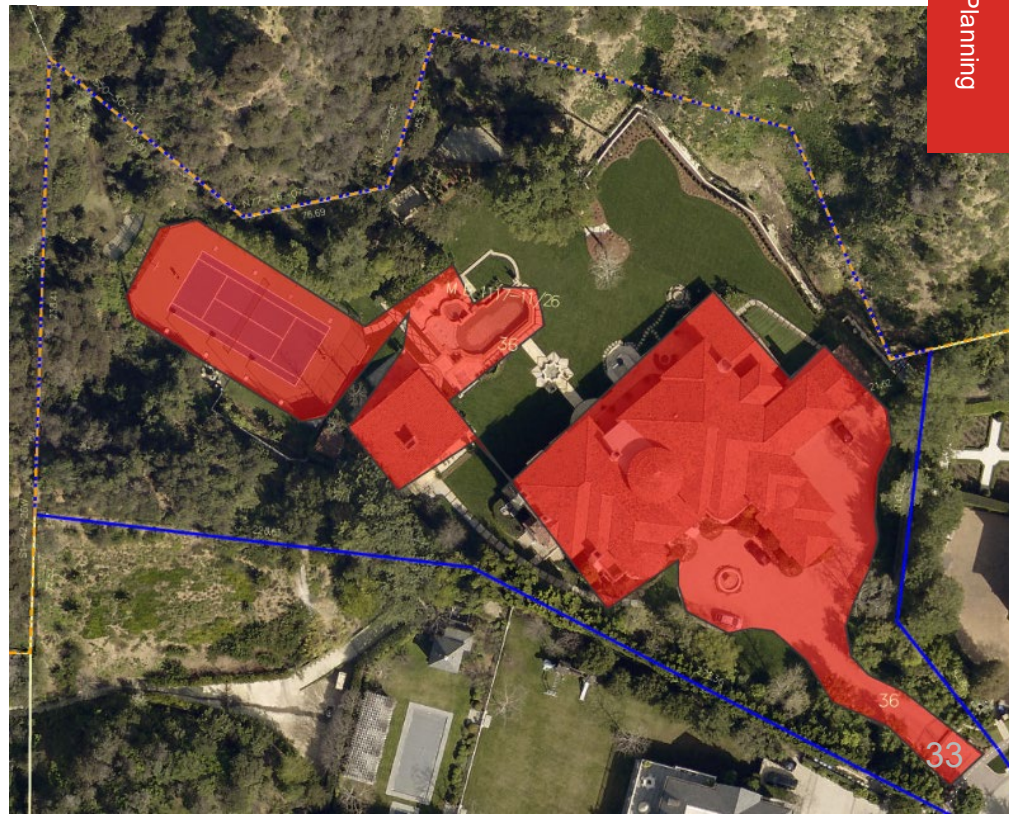
*Building & Structures +
Decks, Pools, Patios, &
Other Pavement*

Wildlife Lot Cover

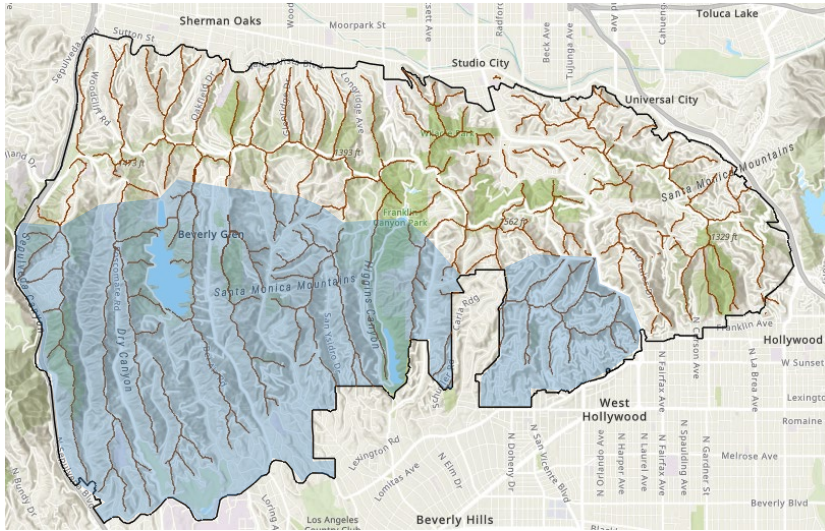
*Shall not exceed 50%
of the total area of the Lot*

+

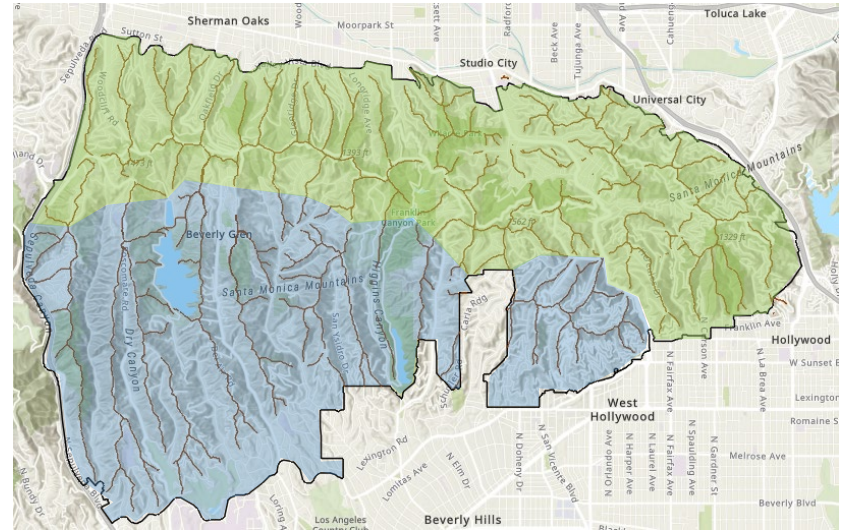
*Shall not exceed 100,000 sf,
whichever is less*



Wildlife Movement, Hillside Aesthetics, and Ridgeline Protection



RPO Ridgelines

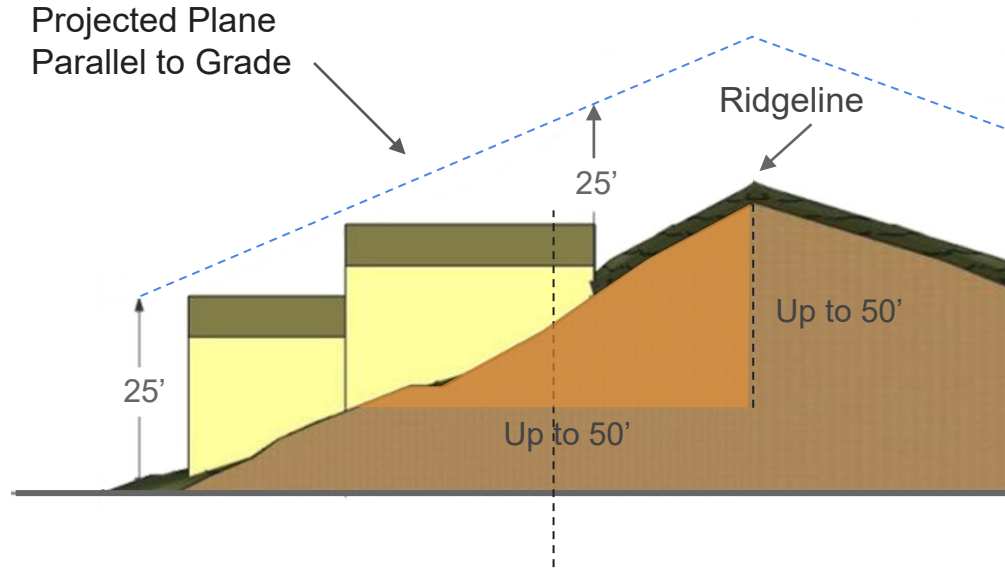


RPO + WLD Ridgelines

Wildlife Movement, Hillside Aesthetics, and Ridgeline Protection

- Maximum Envelope Height is 25 feet
- Envelope Height is continuous and parallel to grade
- Limits visual impact of development on ridgelines

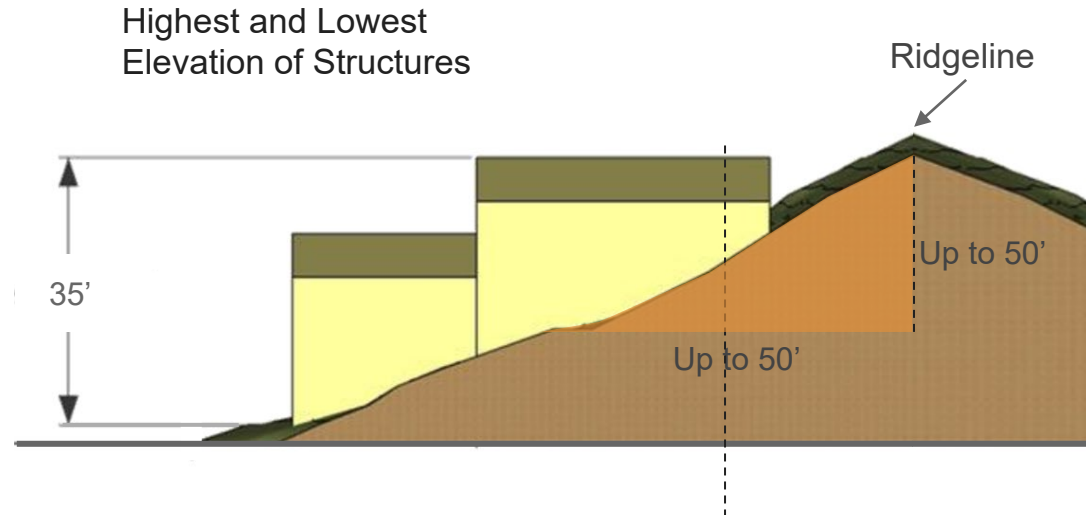
Envelope Height



Wildlife Movement, Hillside Aesthetics, and Ridgeline Protection

Overall Height

- Maximum Overall Height is 35 feet
- Measured from the lowest to the highest elevation of the structure
- Limits the overall development impact on ridgeline sites



Wildlife Movement, Hillside Aesthetics, and Ridgeline Protection

Setbacks

- Require an **additional side yard setback** within 50 feet of a ridgeline
- Encourages wildlife movement across ridgelines



Limit Human-Wildlife Conflicts

Lighting



Windows



Trash Enclosures



Holistic Approach to Wildlife-Friendly Development Standards



Preserve
Sensitive Hillside
Wildlife Habitats



Support
Wildlife
Movement



Reduce
Fire Fuel
Hazards



Enhance
Watershed
Conditions



Retain
Slope
Stability



Timeline & Next Steps

Anticipated Process & Timeline



WE ARE HERE



Thank you!

We look forward to connecting with you!

Project website: planning4la.org/wildlife

Submit your comments on the draft Wildlife
Ordinance to: OURLA2040@lacity.org

Conni Pallini-Tipton, AICP
Senior City Planner

Bonnie Kim
City Planner

Kat Superfisky, MLA, MS, ESA Certified Ecologist
Urban Ecologist

Lena Mik
City Planning Associate

Patrick Whalen
City Planning Associate

Alex Linz
Planning Assistant

