



Building a Better Community

September 15, 2021

VIA EMAIL: redistricting.lacity@lacity.org

City Council Redistricting Commission
City of Los Angeles
200 North Spring Street, Room 275
Los Angeles, California 90012

Re: Bel Air-Beverly Crest Neighborhood Council as a Community of Interest

Dear Chair Ali and Commissioners:

Bel Air-Beverly Crest Neighborhood Council (BABCNC) was established in 2002 and has for nearly 20 years served as the venue for coordination and cooperation across the community of interest that it serves. We represent the hillside communities stretching from Laurel Canyon to Sepulveda Boulevard, and from Sunset Boulevard to Mulholland Drive.

Our Redistricting Task Force has reviewed the census data and used the Districtr mapping tool to explore the possibilities for representing our neighborhood council area while achieving the legally mandated goals of the redistricting process. From this experience we have the following recommendations:

First, the 405 Freeway should represent a hard boundary for the western edge of Council District 5, all the way through the Sepulveda Pass to the southern extent. This natural break separates

OFFICERS

President
Travis Longcore
Vice President – Operations
Robin Greenberg
Vice President – Leg. Affairs
Jamie Hall
Secretary
Nicole Miner
Treasurer
Vadim Levotman

COMMITTEES/CHAIRS

Executive – **Travis Longcore**
Planning and Land Use – **R. Schlesinger & S. Savage**
Bylaws, Rules and Elections – **Cathy Wayne**
Emergency Preparedness –
Outreach – **Robin Greenberg**
Traffic Committee – **Irene Sandler**
Public Works and Telecommunications –
Budget and Finance – **Nicole Miner**
Neighborhood Purpose Grant – **André Stojka**

STAKEHOLDER GROUPS

Bel Air Association
Bel-Air Crest Master Association
Bel Air Hills Association
Bel Air Ridge Association
Benedict Canyon Association
Casiano Estates Association
Doheny-Sunset Plaza Neighborhood Assn.
Holmby Hills Homeowners Association
Laurel Canyon Association
Residents of Beverly Glen

RESIDENTIAL DISTRICTS

Bel Air District
Bel Air Glen District
Franklin-Coldwater District
North of Sunset District

NON-RESIDENTIAL REPRESENTATION

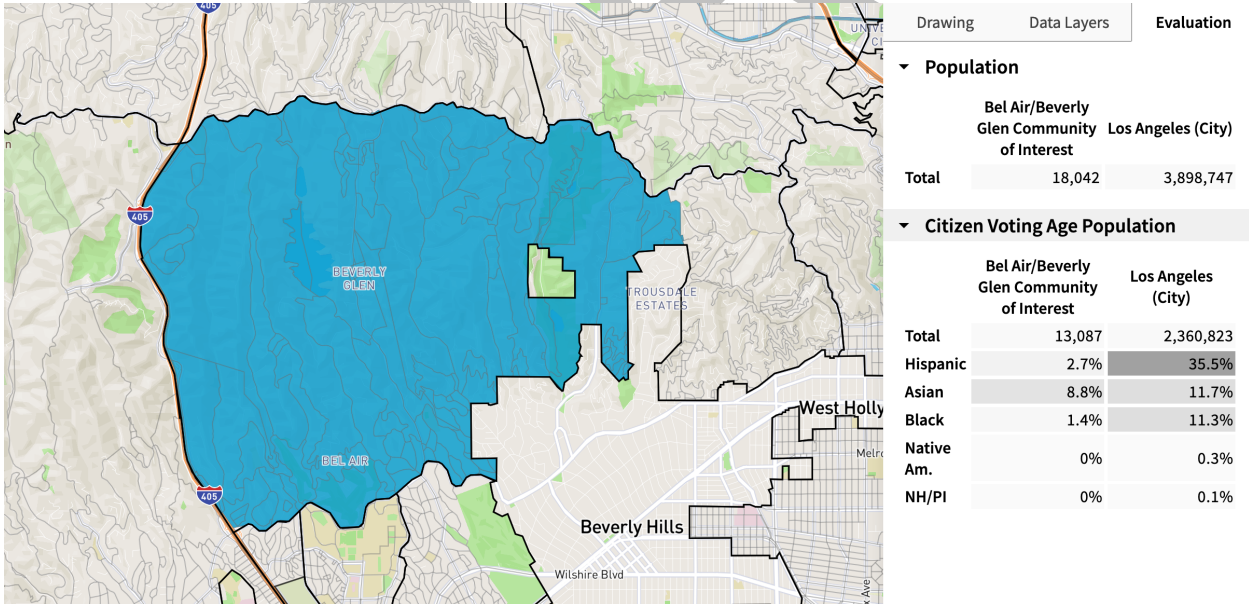
At-Large Members
Commercial or Office Enterprise Districts
Custodians of Open Space
Faith-Based Institutions
Public Schools & Private Schools

communities of interest, their orientation toward commercial districts and other important community features.

Second, our draft maps include two or more districts that extend from the San Fernando Valley through to the Westside because of the similarity of interests shared among hillside residents on either side of Mulholland Drive and extending down to the foothills on either side. We have mapped several alternatives that do this and it is feasible.

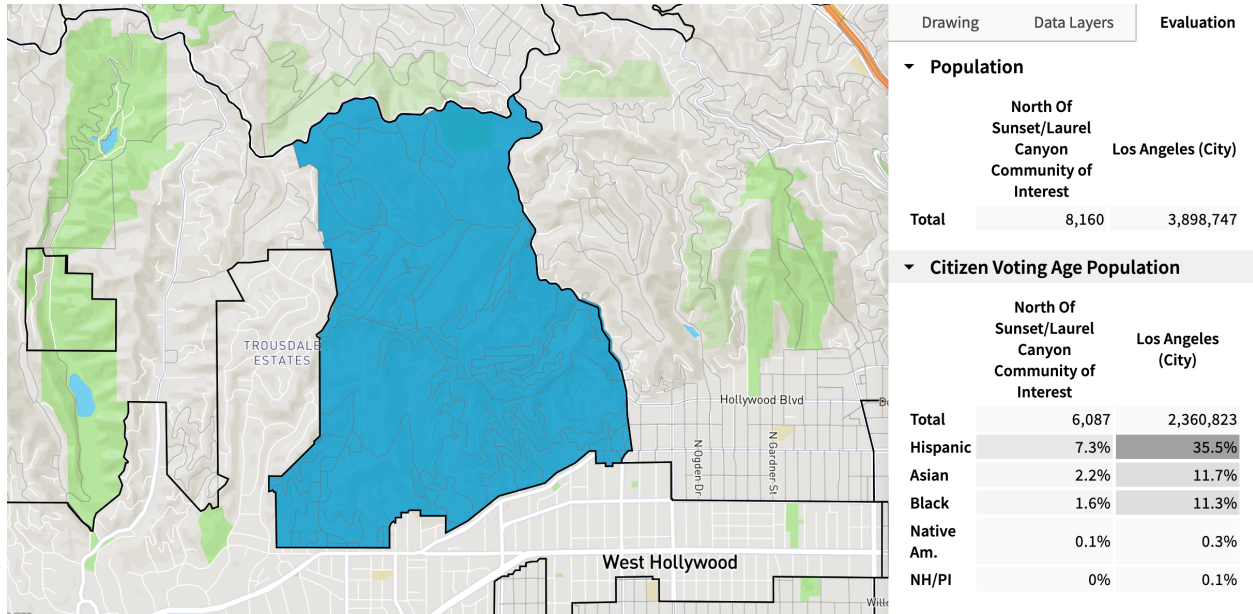
Third, our extensive discussions stimulated by the Districtr tool resulted in a consensus that the connection of the western portion of the BABCNC territory to the areas to the south (including Westwood, Century City, Beverlywood, Cheviot Hills) is more important to keep communities of interest together than it is for Laurel Canyon and North of Sunset neighborhoods to be kept in the same district as this eastern portion. However, should BABCNC territory be split, it should be split such that Coldwater Canyon, Bowmont Drive, Hazen Drive, and Briarcrest Drive are kept with the western portion of the territory (CD 5). This dividing line is also used by the police department to separate its service areas.

We have developed sample maps that illustrate these principles. The two sub-communities within the BABCNC territory include Bel Air and Beverly Glen through Coldwater Canyon, as follows:



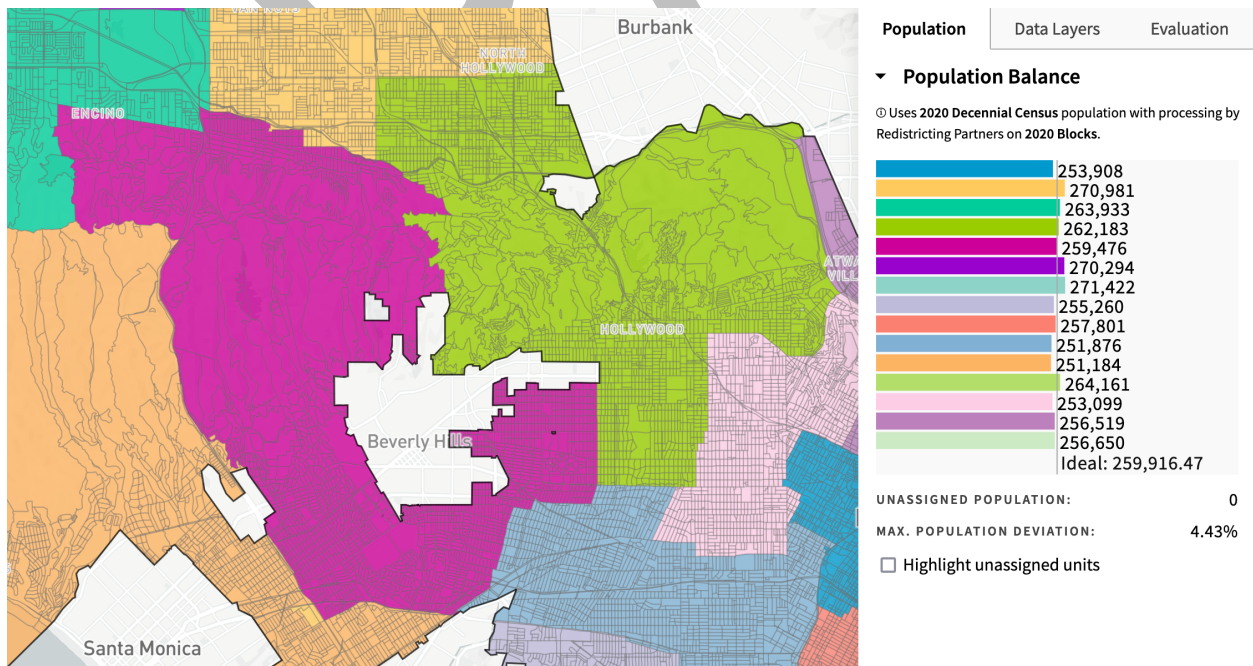
<https://districtr.org/COI/44352>

And then North of Sunset and Laurel Canyon:



<https://districtr.org/COI/44355>

These two parts of the BABCNC territory, if split, would join with similar communities contiguous with them. In this example, the BABCNC territory is split between CD 4 in the east and CD 5 in the west, and each of the Santa Monica Mountains districts (11, 5, 4) includes the similar hillside areas on the north and south slopes of the mountains.



<https://districtr.org/plan/43102>

Although we prepared a map for the entire city as a demonstration that this configuration is possible, we focus our recommendation on CD 4 and CD 5 and how the BABCNC territory could be integrated into those districts in a manner that keeps together our communities of interest.

This letter was approved by a unanimous vote of the Bel Air-Beverly Crest Neighborhood Council at a regular meeting, publicly noticed pursuant to the Brown Act, on September XX, 2021, with a quorum of XX Board members present and voting.

Sincerely,

Travis Longcore, Ph.D., President
Bel Air-Beverly Crest Neighborhood Council
tlongcore@babnc.org

DRAFT