

Attachment "B"

SANTA MONICA MOUNTAINS CONSERVANCY

KING GILLETTE RANCH
26800 MULHOLLAND HIGHWAY
CALABASAS, CALIFORNIA 91302
PHONE (818) 878-0866
FAX (818) 878-0508
WWW.SMMC.CA.GOV



April 1, 2021

Request for Public Comments on Draft Big Wild - Topanga State Park Core Habitat Area Planning Map

To whom it may concern:

As the principal State planning agency for the Santa Monica Mountains Zone, the Santa Monica Mountains Conservancy (Conservancy) desires to adopt official Planning Maps for discrete geographical areas within the Zone. All of the Santa Monica Mountains in the Santa Monica Mountains Zone are defined as an environmental resource of critical concern in the California Public Resources Code.

At its February 2021 meeting the Conservancy directed staff to circulate the attached draft Planning Map for widespread public review and comment. The Conservancy will consider adoption of this *Big Wild - Topanga State Park Core Habitat Area Planning Map* at its regularly scheduled on May 17, 2021. All comments are welcome and will be made available to the Conservancy and Advisory Committee as part of the future staff report. Comments emailed by May 11, 2021 will be included in the online staff report. Comments received thereafter will be emailed to the Conservancy and Advisory Committee prior to the Conservancy meeting. The Conservancy reserves the right to extend the comment period.

The Planning Map area encompasses the portion of the Santa Monica Mountains from the 405 freeway west to the edge of Topanga Canyon Boulevard (SR 27). This area is often referred to as the Big Wild. The Big Wild is the approximately 20,000-acre contiguous area including Topanga State Park that is not bisected by a paved road. The attached map also includes all currently identified habitat blocks located in the subject area but not contiguous to the Big Wild. It also shows habitat connections across the 405 freeway/Sepulveda Boulevard and Topanga Canyon Boulevard.

The maps are designed as tools to identify potential constraints and opportunities to help protect habitat connections and land within all sized habitat blocks. The maps are all constructed by GIS staff using the best available electronic data and some ground truthing. The perimeters of habitat blocks are depicted from the most recent and highest resolution aerial photography available. Most often that is Google Earth aerial photography. Often back year aerial photography shows a particular area much better than the most current available photography. The lines showing habitat connections are often enhanced with Google Earth street view photography.

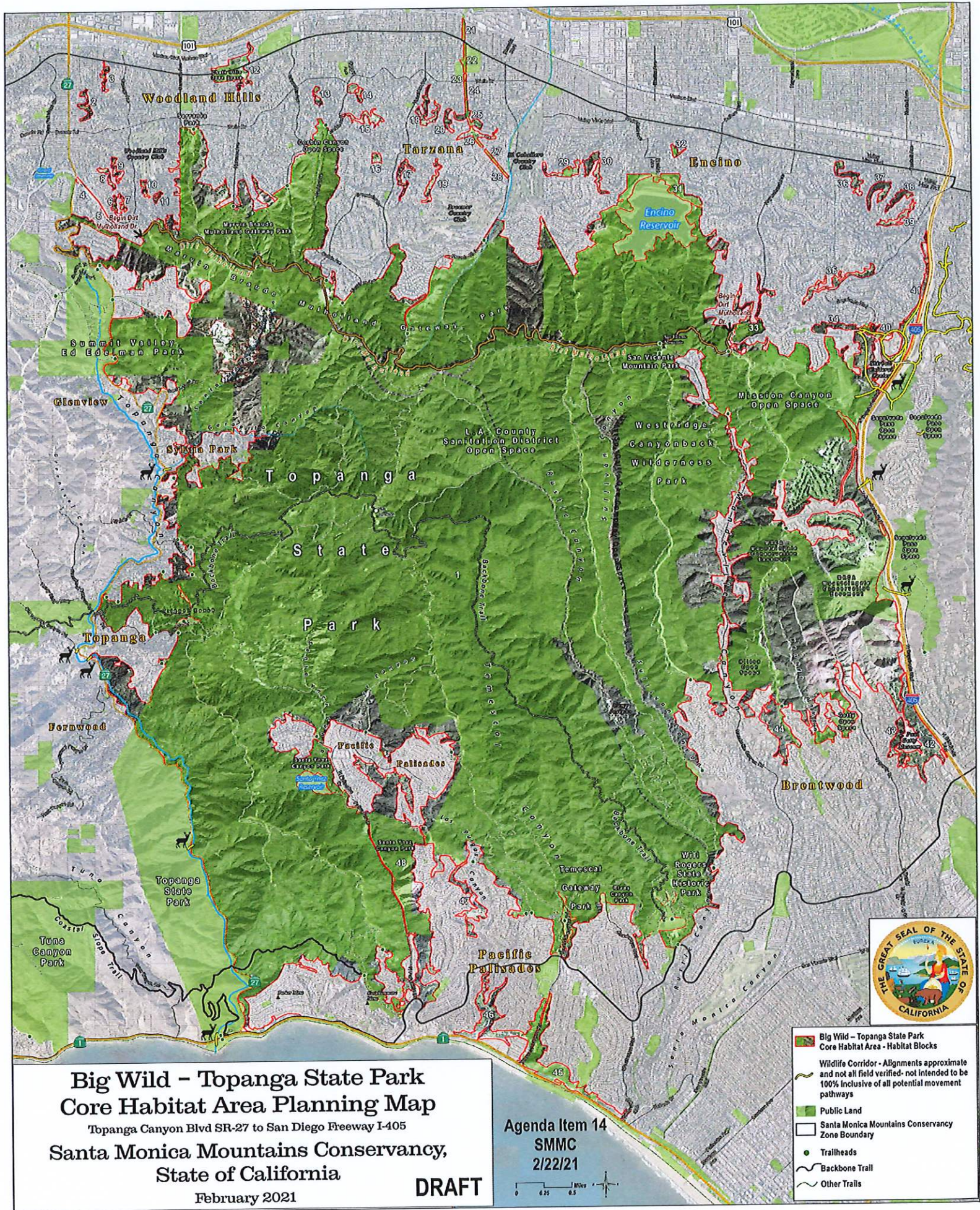
Santa Monica Mountains Conservancy Request for Comments
Big Wild - Topanga State Park Core Habitat Area Planning Map
April 1, 2021
Page 2

For the subject draft *Big Wild - Topanga State Park Core Habitat Area Planning Map* the aerial photography within the delineated habitat blocks is from February 2, 2020 0.5 meter MAXAR aerial from ESRI base maps. The area shown outside the habitat blocks is based on 2014 LARIAC data. All of the subject area is covered by the Google Earth 2020 aerial photography layer. The Conservancy does not have access to the County's 2019 LARIAC data.

On the ground conditions are fluid because fences can come and go and new construction occurs in almost every neighborhood. It is impossible to provide a perfect map in time; and hence, this mapping effort is meant to be an iterative process that includes continuous input from all available sources. Each distinct habitat block polygon is sequentially numbered to establish baseline nomenclature for easy reference between parties.

Comment Period: Comments emailed by May 11, 2021 will be included in the online staff report. Comments received thereafter will be emailed to the Conservancy and Advisory Committee prior to the Conservancy meeting. The Conservancy reserves the right to extend the comment period.

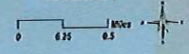
Please email any comments to Paul Edelman, Deputy Director for Natural Resources and Planning at edelman@smmc.ca.gov.



**Big Wild - Topanga State Park
Core Habitat Area Planning Map**
 Topanga Canyon Blvd SR-27 to San Diego Freeway I-405
**Santa Monica Mountains Conservancy,
State of California**
 February 2021

DRAFT

Agenda Item 14
 SMMC
 2/22/21



- Big Wild - Topanga State Park Core Habitat Area - Habitat Blocks
- Wildlife Corridor - Alignments approximate and not all field verified- not intended to be 100% inclusive of all potential movement pathways
- Public Land
- Santa Monica Mountains Conservancy Zone Boundary
- Trailheads
- Backbone Trail
- Other Trails