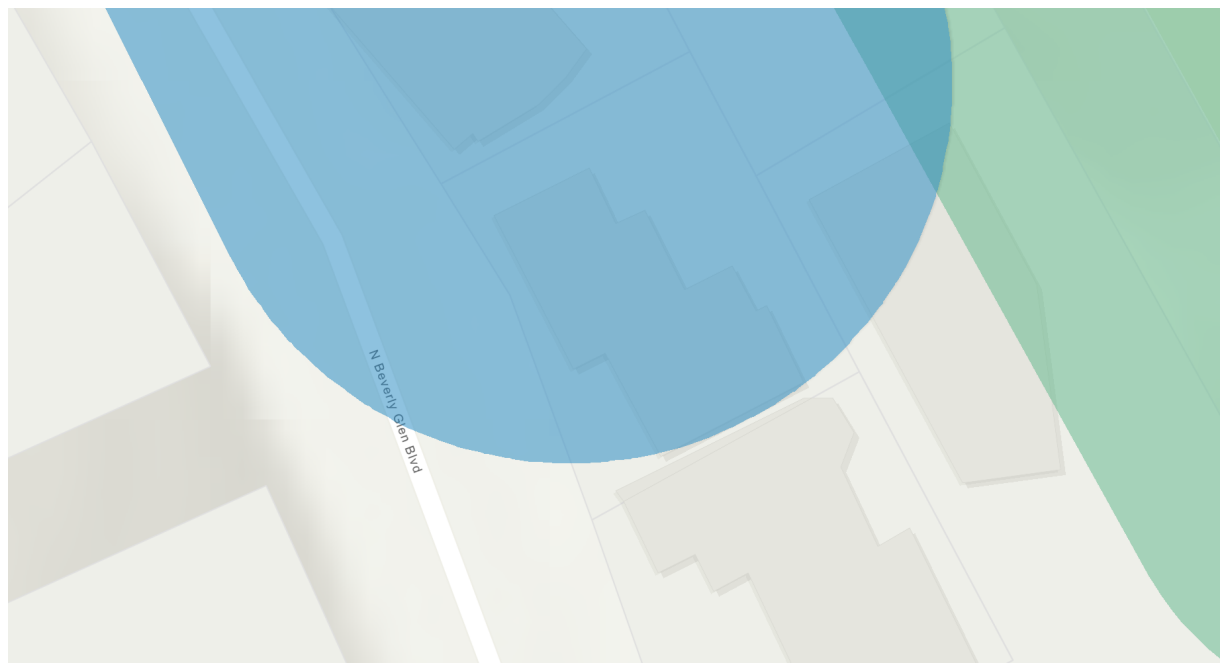
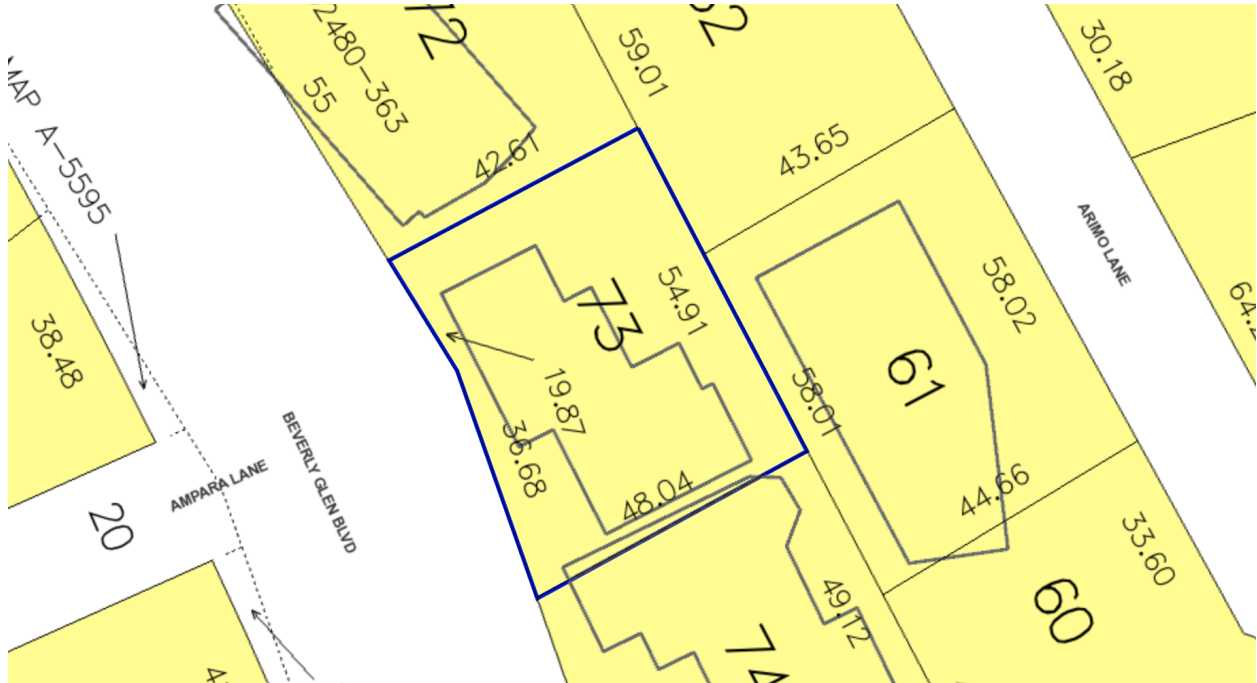


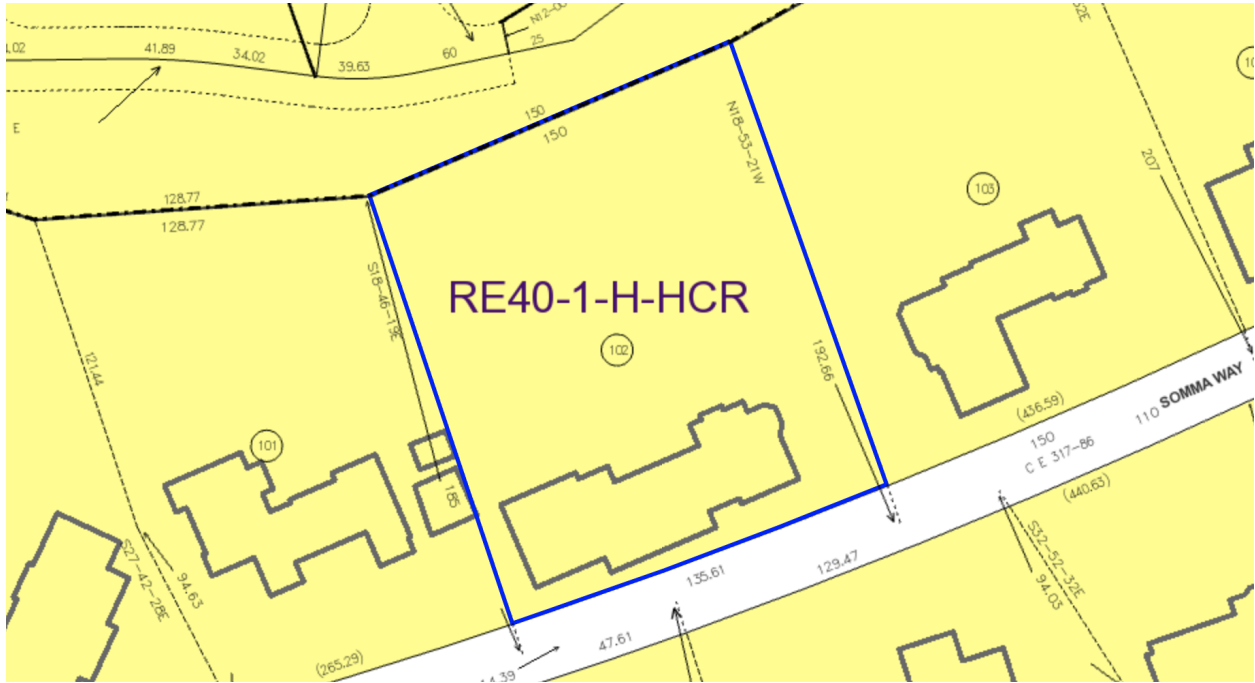
Attachment A

Bel Air-Beverly Crest Neighborhood Council Ad Hoc Subcommittee on Proposed Wildlife District Proposed Potential Sample Lots May 24, 2022

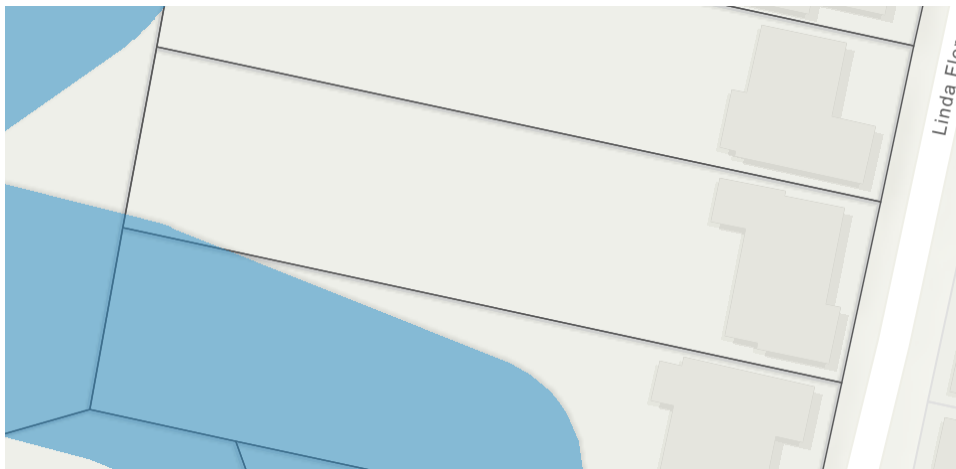
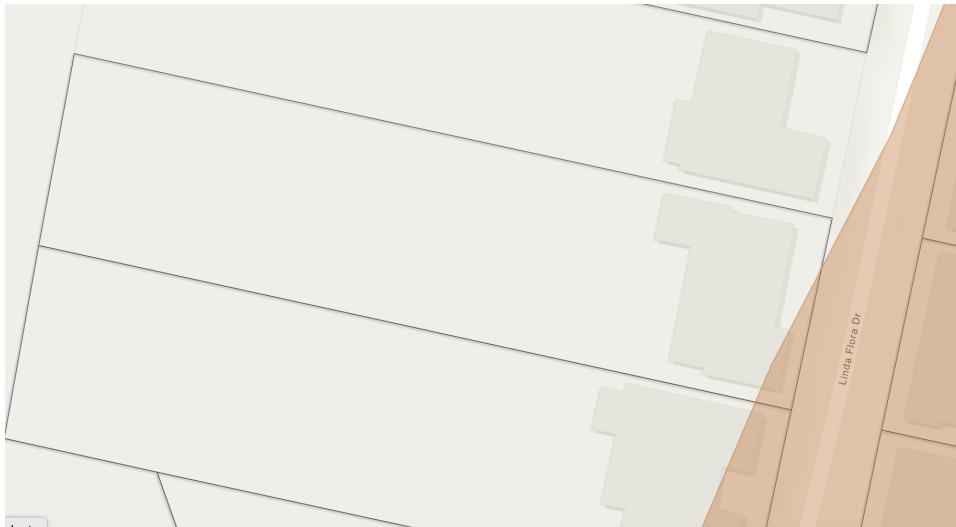
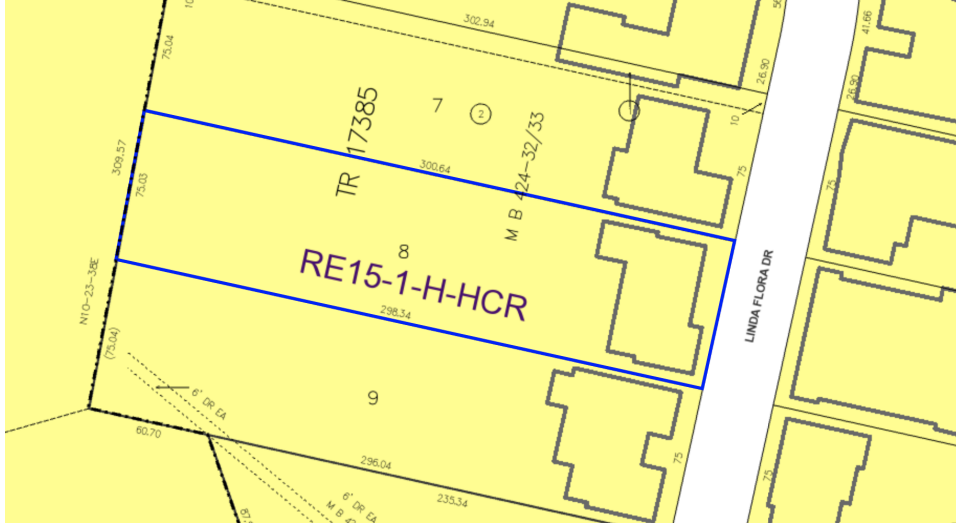
Proposed Sample Lot #1
1322 Beverly Glen Blvd. APN 4371030013
2444.8 square feet, ~55 wide by ~ 48 deep
RE15, Open Space and Water Resource Buffers



Proposed Sample Lot #3
10661 Somma Way
26,702 square feet
Substandard Hillside Limited Street
RE 40



Proposed Sample Lot #4
2035 Linda Flora APN 4377007009
22,463 square feet
RE15
Ridgeline and Resource Buffers



Proposed Sample Lot #5
933 Airole Way
59,000 square feet
RE20



Proposed Sample Lot #6

1411 Laurel Way
14,170 square feet
RE15
Ridgeline Buffer

